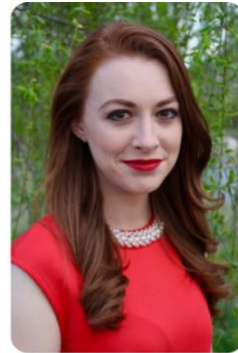


Marble City Opera
presents...



2021-2022 Season Kick-Off Concert

Saturday, September 4th
7 pm

Flying Anvil Theater

Program

<u>Selection</u>	<u>Performer(s)</u>
“Libiamo ne' lieti calici” from <i>La Traviata</i>	Evans/Frady
“Lilac Wine” by: James Shelton	Dominick White
“La Calunnina” from <i>The Barber of Seville</i>	David Crawford
“Music, Music, Music” by: Regina Blitzstein	Kayla Beard
“Sull’aria...” from <i>The Marriage of Figaro</i>	Beard/Frady
“Flower Song” from <i>Carmen</i>	Brandon Evans
“Mario! Mario! Son qui!” from <i>Tosca</i>	Evans/Frady
“Revival Scene” from <i>Susannah</i>	David Crawford

(Pause)

“I’m a Stranger Here” by: Kurt Weill	Kayla Beard
Preview/Reading: <i>I Can’t Breathe</i>	Dominick White
“Still Pretty” from <i>The Copper Queen</i>	Kathryn Frady
“The Impossible Dream” from <i>Man of La Mancha</i>	David Crawford
“Silvio’s Aria” from <i>Pagliacci</i>	Dominick White
“Tonight” from <i>West Side Story</i>	White/Beard
“Bring Him Home” from <i>Les Miserables</i>	Brandon Evans
“Lily’s Eyes” from <i>The Secret Garden</i>	Evans/Crawford
“Girl in 14G” by: Tesori/Scanlan	Kathryn Frady

Directed by:

Marya Barry & James Marvel

Accompanied by:

Brandon Coffey

Bios



Marya Barry is an emerging stage director from Debary, Florida. She completed her undergraduate education at Stetson University where she performed as a member of the Stetson University Opera Theater for four years. In addition to her education, Marya has participated in young artist programs abroad including the Varna International Opera Academy in Bulgaria and Oberlin in Italy. As a graduate of The University of Tennessee with a Masters in Voice Performance, she also completed an independent study in opera directing with her professor and mentor James Marvel. She has worked as an assistant director with Marble City Opera in productions such as *The Human Voice*, *Follow Suit*, and *The Telephone*. Marya also directed two U.S premieres with Marble City Opera: *The Nero Monologues* in 2018 and *City of Ashes* in 2019. She most recently directed Marble City Opera's site-specific performance of Puccini's *Tosca* in June of 2021. She is honored and excited to be a part of yet another wonderful Marble City Opera performance.



Internationally acclaimed stage director James Marvel was born and raised in New Orleans and made his Lincoln Center debut in 2008 for the Juilliard Opera Center. Since his professional directing debut in 1996, James has directed over 100 productions and was named Classical Singer Magazine's "2008 – Stage Director of the Year." Career highlights include groundbreaking new productions for the Kimmel Center in Philadelphia, Opera Carolina, Opera Boston, Opera Santa Barbara, Syracuse Opera, Opera Grand Rapids, Austin Lyric Opera, San Antonio Opera, Kentucky Opera, Virginia Opera, North Carolina Opera, Toledo Opera, Sacramento Opera, Utah Festival Opera, Aspen Music Festival, Wolf Trap Opera, Santa Fe Opera, San Francisco Opera's Merola Program, Indiana University, and the University of Southern California.

International credits include a new production of *Carmen* for Opera Africa in Johannesburg and *Die Zauberflöte* for the Seoul International Opera in South Korea. Other international credits include work in Canada, Scotland, England, Poland, The Czech Republic, Slovakia, and Hungary. He serves as Director of Opera for the University of Tennessee at Knoxville.

Bios (continued)

Name/Voice type: Brandon Evans, tenor

Hometown: Palm Harbor, FL

Where you live now: Sarasota, FL

Opera Companies: Opera Orlando, Indianapolis Opera, St. Petersburg Opera

Symphonies: Port Charlotte Orchestra

Name/Voice type: David Crawford, bass-baritone

Hometown: Pittsburgh, PA

Where you live now: Knoxville, TN

Opera Companies: Metropolitan Opera, Boston Lyric Opera, Atlanta Opera, Knoxville Opera

Symphonies: Knoxville Symphony, Columbus Symphony, Chautauqua Symphony

Name/Voice type: Dominick White, baritone

Hometown: Knoxville, TN

Where you live now: Knoxville, TN

Opera Companies: Piedmont Opera, Marble City Opera

Name/Voice type: Kathryn Frady, soprano

Hometown: Plano, TX

Where you live now: Knoxville, TN

Opera Companies: New Orleans Opera, Opera Carolina, Knoxville Opera, Cleveland Opera Theater, Wichita Grand Opera, Marble City Opera, Opera West!, Opera in the City Festival in London, Diversita Opera Company in Dallas, The Pierre Cardin Theater in Paris, The Mediterranean Opera Festival, National Opera Center in New York City, Opernfest Prauge

Symphonies: Helena Symphony, Chattanooga Symphony, Knoxville Symphony

Name/Voice type: Kayla Beard, Soprano

Hometown: Buffalo, MN

Where you live now: Knoxville, TN

Opera Companies: Marble City Opera, Knoxville Opera, UTOT, Harrower Opera Company

Thank You to our Board of Directors!

Jerrold Becker
Mardel Fehrenbach
Kimberly Henry
Erin Reece
Joe Trahern
James Marvel
Delores Ziegler
Michelle Brewer
Michael Torano
Chrissy Keuper
Sheena McCall
Tom Fine
Patricia Maffeo
April Hill
Frank Murphy
Jacob Love
Susie Allen
Michael Combs
Dominick White
Vic Chavez
Mary Morris
Greg Sherrill

Thank You to our Partners and Sponsors!

Knoxville Arts & Culture Alliance
Tennessee Arts Commission
East Tennessee Foundation



Join us for our “Season of American Opera”!



“Lily; her life, his music” (Babcock/Weill)

October 29 & 30, 2021

Flying Anvil Theater

Regional Premiere

Directed by: James Marvel



“I Can’t Breathe” (Burrs/Gibson)

February 24-26, 2022

Beck Cultural Exchange Center

World Premiere

Directed by: Jonathan Clark



“The Copper Queen” (Borzoni/de los Santos)

June 2-4, 2022

L&N Stem Academy

Stage Premiere

Directed by: John de los Santos

Follow us online!

www.MarbleCityOpera.com

www.Facebook.com/MarbleCityOpera

www.Twitter.com/MarbleCityOpera

www.Instagram.com/MarbleCityOpera

www.YouTube.com/MarbleCityOpera

Marble City Opera is a 501c3 non-profit organization. To make a tax-deductible
donation visit:

www.MarbleCityOpera.com/support

or mail a check made payable to **Marble City Opera** to:

548 Lost Tree Ln.

Knoxville, TN 37934

THANK YOU for your support!